

# Optional PSE (Power Sourcing Equipment) Module:IPS-2042TX

■ DC Power Input  
■ Ethernet

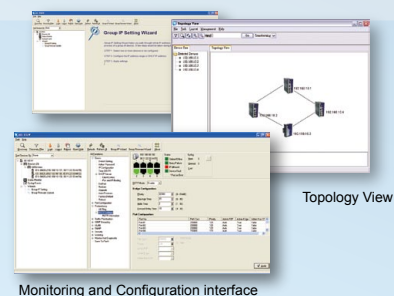


## Hardware Features

- Wide Operating Temperature: -40 to 70 °C
- Storage Temperature: -40 to 85 °C
- Operating Humidity: 5% to 95%, non-condensing
- 4 x 10/100Base-T(X) Ethernet port with PSE provides up to 25 watts (TI high-power design)
- 10/100Base-T(X) Ethernet port

## Software Features

- World's fastest Redundant Ethernet Ring (Recovery time < 10ms over 250 units connection)
- Supports Ring Coupling, Dual Homing and RSTP over O-Ring
- Support fast recovery mode
- Easy-to-configure: Web / Windows utility
- Windows utility (Open-Vision) for network management



## Specification

ORing Switch Model	IPS-2042TX
Physical Ports	
10/100 Base-T(X) Ports in RJ45Auto MDI/MDIX with PSE	4
10/100 Base-T(X) Ports in RJ45Auto MDI/MDIX without PSE	2
Technology	
Ethernet Standards	IEEE 802.3 for 10BaseT, IEEE 802.3u for 100BaseT(X) and 100BaseFX, IEEE 802.3x for Flow control, IEEE 802.1D for STP (Spanning Tree Protocol), IEEE 802.1w for RSTP (Rapid Spanning Tree Protocol), IEEE 802.1AB for LLDP (Link Layer Discovery Protocol), IEEE 802.3af PoE specification (up to 25 Watts per port for PSE)
MAC Table	2048 MAC addresses
Priority Queues	4
Processing	Store-and-Forward
Store-and-Forward	Switching bandwidth: 1.0Gbps
VLAN: Port Based	
Security Features	
VLAN to segregate and secure network traffic	Enable/disable ports
Software Features	STP/RSTP (IEEE 802.1D/w), Redundant Ring (O-Ring) with recovery time less than 10ms over 250 units Port configuration, status, statistics, monitoring, security
Network Redundancy	O-Ring, STP, RSTP

Fault Contract	
Relay	Relay output to carry capacity of 1A at 24VDC
Power	
Redundant Input power	Triple DC inputs. 12-48VDC on 7-pin terminal block, 12-45VDC on power jack
Power consumption (Typ.)	5W (Power for PSE isn't included)
Overload current protection	Present
Reverse polarity protection	Present on terminal block
Physical Characteristic	
Enclosure	IP-30
Dimension (W x D x H)	52(W)x106(D)x144(H) mm (2.05x4.17x5.67 inch.)
Weight (g)	696 g
Environmental	
Storage Temperature	-40 to 85°C (-40 to 185°F)
Operating Temperature	-40 to 70°C (-40 to 158°F)
Operating Humidity	5% to 95% Non-condensing

## Ordering Information

Part Number	Description
IPS-2042TX	Industrial 6-port Lite-Managed P.O.E. Ethernet Switch with 6 x 10/100TX

## Packing List

1 x IPS-2042TX	1 x Utility CD includes technical document and utilities
1 x Screw kit	